



*Your Dairy Grade Hose Connection*

# DIARY DELIVERY HOSE



[www.jgbhose.com](http://www.jgbhose.com)

JGB Headquarters  
115 Metropolitan Drive  
Liverpool, NY 13088  
(315) 451-2770

Buffalo Branch  
2540 Walden Ave.  
Cheektowaga, NY 14225  
(716) 684-8224

Southeast Regional Hub  
1407 Westinghouse Blvd.  
Charlotte, NC 28273  
(704) 588-9920

St. Louis Branch  
9707 Green Park Industrial Dr.  
St. Louis, MO 63123  
(314) 487-3144

Williston Branch  
520 Bean Dr.  
Williston, ND 58801  
(701) 570-2945

Houston Branch  
619 E. Sam Houston Pkwy.  
Suite 200  
Pasadena, TX 77503  
(281) 930-7777

# Contitech 3-A Series Hoses

## Plicord ExtremeFlex Beverage Hose



- Tube:** White Chlorobutyl (FDA/USDA compliant & conforms to a 3-A Sanitary Standard 18-03)
- Reinforcement:** Spiral-plyed fabrics with double galvanized helix wire
- Cover:** Corrugated grey chemical (wrapped impression)
- Temperature:** -30°F to 220°F (-34°C to 104°C)
- Order Codes:** 549-603 Gray Cover  
549-004 Red Microban Cover

For beer, wine, distillery and beverage (edible liquid) transfer processing facilities. Ideal for applications requiring flexible and/or tight bend connections.

Part#	ID		Nom. OD		Max. WP		Bend Radius		Vacuum HG@72°F		Weight	
	in.	mm	in.	mm	psi	MPa	in.	mm	in.	mm	lb./ft.	kg/m
20762678	1	25.4	1.56	39.7	250	1.72	1.5	38	29	737	0.73	1.09
20762679	1-1/2	38.1	2.02	51.3	250	1.72	2.3	57	29	737	0.92	1.38
20762751	2	50.8	2.53	64.2	250	1.72	3.0	76	29	737	1.20	1.79
20762752	3	76.2	3.59	91.2	200	1.38	4.5	114	29	737	2.02	3.01
20762753	4	101.6	4.60	116.8	150	1.03	6.0	152	29	737	2.76	4.11

# Contitech 3-A Series Hoses

## Plicord ExtremeFlex Beverage Red w/EZ Clean Cover Hose



- Tube:** White Chlorobutyl (FDA/USDA compliant & conforms to a 3-A Sanitary Standard 18-03)
- Reinforcement:** Spiral-plyed fabrics with double galvanized helix wire
- Cover:** Corrugated grey chemical (wrapped impression), new corrugated red EZ Clean UHMWPE cover (semi-smooth finish)
- Packaging:** 100' length, coiled, polywrapped
- Temperature:** -30°F to 220°F (-34°C to 104°C)
- Order Codes:** 549-605 EZ Clean Red Cover

For beer, wine, distillery and beverage (edible liquid) transfer processing facilities. Ideal for applications requiring flexible and/or tight bend connections.

Part#	ID		Nom. OD		Max. WP		Bend Radius		Vacuum HG@72°F		Weight	
	in.	mm	in.	mm	psi	MPa	in.	mm	in.	mm	lb./ft.	kg/m
20776605	1	25.4	1.52	38.7	250	1.72	2	51	29	737	0.65	0.96
20762754	1-1/2	38.1	2.03	51.6	250	1.72	3	76	29	737	0.93	1.38
20752524	2	50.8	2.537	64.5	250	1.72	4	102	29	737	1.21	1.80
20762758	3	76.2	3.601	91.5	200	1.38	6	152	29	737	2.03	3.02
20762760	4	101.6	4.607	117	150	1.03	8	203	29	737	2.77	4.12

# Contitech 3-A Series Hoses

## Plicord ExtremeFlex Food Hose



- Tube:** White Chemivic™ synthetic rubber (FDA/USDA compliant and conforms to 3-A Sanitary Standard 18-03)
- Reinforcement:** Spiral-plyed synthetic fabric with galvanized wire helix
- Cover:** White or gray Chemivic™ corrugated synthetic rubber (wrapped impression)
- Packaging:** 1/4"-5/8" – 300' Bagel Pack, one piece  
3/4" and 1" – 200' Bagel Pack, one piece
- Temperature:** -25°F to 212°F (- 32°C to 100°C)
- Branding:** Continental ContiTech Plicord® ExtremeFlex™ Food Grade 150 psi WP
- Non-Stock/Sizes:** 400' minimum order
- Order Codes:** 549-462 (white)  
549-164 (gray)

A high-tech, flexible corrugated hose with pretzel-like agility and proven performance. Best of all, it is available at a non-corrugated price, making it a great value. With ExtremeFlex™, there's even more to appreciate:

- **Flexible Handling:** Easier to move in and out of tight spaces and around sharp corners.
- **Lightweight:** Easier to lift and carry, so there are fewer workplace injuries.
- **Lower Force to Bend:** Easier to connect and disconnect, keeping productivity high.

SAP#	SAP#	ID		Nom. OD		Max. WP		Bend Radius		Vacuum HG		Weight			
		White	Gray	in.	mm	in.	mm	psi	MPa	in.	mm	in.	mm	lb./ft.	kg/m
20478040	20483718			2	51.2	2.4	62.0	150	1.03	2	51	29	737	1.00	1.48
20478043	20483781			3	76.1	3.5	89.9	150	1.03	3	76	29	737	1.89	2.79
20478044	20483782			4	102.1	4.6	116.6	150	1.03	4	102	29	737	2.69	3.98

## Plicord Brewline Hose



- Tube:** White chlorobutyl rubber (FDA/USDA compliant and conforms to 3-A Sanitary Standard 18-03)
- Reinforcement:** Spiral-plied synthetic fabric, 4 plies to 1-1/2" ID; 6 plies over 1-1/2" ID
- Cover:** Red EPDM with a white spiral stripe (wrapped impression)
- Packaging:** 100' length, coiled, polywrapped
- Temperature:** -40°F to 220°F (-40°C to 104°C)
- Branding:** Example: Continental ContiTech Plicord® Brewline® hose 250 psi; FDA, 3-A and USDA
- Order Codes:** 549-885 Red Cover  
549-003 Microban with Red Cover

A quality discharge hose designed specifically for the highly demanding service of transferring non-oily liquid products in wineries and breweries.

SAP#	ID		Nom. OD		Max. WP		Weight	
	in.	mm	in.	mm	psi	MPa	lb./ft.	kg/m
20020324	3/4	19.1	1.34	34.0	250	1.72	0.54	0.80
20020327	1	25.4	1.69	42.9	250	1.72	0.81	1.21
20032192	1e	31.8	2.00	50.8	250	1.72	1.05	1.56
20020335	1f	38.1	2.23	56.6	250	1.72	1.19	1.77
20020341	2	50.8	2.88	73.2	250	1.72	1.86	2.77
20020345	2f	63.5	3.51	89.2	250	1.72	2.66	3.96
20020348	3	76.2	4.09	103.9	250	1.72	3.57	5.31
20020352	4	101.6	5.31	134.9	250	1.72	5.43	8.08

# Contitech 3-A Series Hoses

## Plicord Winline Hose



- Tube:** White chlorobutyl rubber (FDA/USDA compliant and conforms to 3-A Sanitary Standard 18-03)
- Reinforcement:** Spiral-plyed synthetic fabric, 4 plies to 1-1/2" ID; 6 plies over 1-1/2" ID
- Cover:** White EPDM rubber with a purple spiral stripe (wrapped impression)
- Packaging:** 1/4"-5/8" – 300' Bagel Pack, one piece  
3/4" and 1" – 200' Bagel Pack, one piece
- Temperature:** -40°F to 220°F (-40°C to 104°C)
- Branding:** Example: Continental ContiTech Plicord® Winline® hose 250 psi; FDA, 3-A, and USDA

A quality, non-toxic hose for handling wine, potable water, and other non-oily liquid food products where the hose must meet FDA requirements. For discharge service and suction service up to 20" hg vacuum at ambient temperature.

SAP#	ID		Nom. OD		Max. WP		Weight	
	in.	mm	in.	mm	psi	MPa	lb./ft.	kg/m
20020367	3/4	19.1	1.39	35.3	250	1.72	0.60	0.89
20020371	1	25.4	1.69	42.9	250	1.72	0.80	1.19
20099578	1-1/4	31.8	2.00	50.8	250	1.72	1.04	1.55
20020376	1-1/2	38.1	2.23	56.6	250	1.72	1.20	1.79
20020379	2	50.8	2.92	74.2	250	1.72	1.98	2.95
20020380	2-1/2	63.5	3.50	88.9	250	1.72	2.65	3.94
20020382	3	76.2	4.09	103.9	250	1.72	3.55	5.28
20031599	4	101.6	5.30	134.6	250	1.72	5.40	8.04

## Plicord Vintner Hose



- Tube:** White chlorobutyl (FDA/USDA compliant and conforms to 3-A Sanitary Standard 18-03)
- Reinforcement:** Spiral-plyed synthetic fabric with Monofilament Helix
- Cover:** Gray EPDM synthetic rubber (wrapped) / purple branding tape
- Packaging:** 100' length, coiled, polywrapped
- Temperature:** -30°F to 220°F (- 34°C to 104°C)
- Branding:** Example: Continental ContiTech Plicord® Vintner™ 250 psi; FDA, 3-A, and USDA
- Order Codes:** 549-886 White Cover  
549-009 Red Microban Cover

For handling in-plant and/or tank truck transfer of wine, beer, potable water and other non-oily, liquid foodstuffs.

SAP#	ID		Nom. OD		Max. WP		Bend Radius		Vacuum HG@72 °F		Weight	
	in.	mm	in.	mm	psi	MPa	in.	mm	in.	mm	lb./ft.	kg/m
20020354	1	25.4	1.62	41.1	250	1.72	3	76	27	686	0.71	1.06
20020356	1-1/2	38.1	2.11	53.6	250	1.72	4	102	27	686	0.98	1.46
20020361	2	50.8	2.68	68.1	250	1.72	7	178	27	686	1.38	2.05
20020362	2-1/2	63.5	3.21	81.5	250	1.72	10	254	27	686	1.78	2.65
20020365	3	76.2	3.85	97.8	250	1.72	12	305	27	686	2.59	3.86

# Contitech 3-A Series Hoses

## Pliovic FG Hose



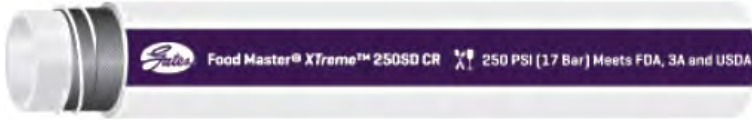
- Tube:** Clear Pliovic® compound, conforms to FDA, USDA, NSF-61 and 3-A standards
- Reinforcement:** Spiral synthetic yarn
- Cover:** Clear Pliovic® compound, conforms to FDA, USDA, NSF-61 and 3-A standards
- Packaging:** 1/4"-5/8" – 300' Bagel Pack, one piece  
3/4" and 1" – 200' Bagel Pack, one piece
- Temperature Range:** -10°F to 158°F (-23°C to 70°C)
- Branding:** Example: Continental ContiTech Pliovic® FG FDA & 3-A Compliant 3/8" ID (9.5mm) 250 psi WP (1.7 MPa). Made in U.S.A.
- Non-Stock/Sizes:** Contact customer service for availability on cut, coiled and tied hose lengths.

A versatile, lightweight, reinforced tubing for the food and beverage, general air, multipurpose, pharmaceutical and cosmetics industries; computer component manufacturers; textile mills; and air-actuated equipment.

SAP#	ID		Nom. OD		Max. WP		Weight	
	in.	mm	in.	mm	psi	MPa	lb./ft.	kg/m
20129509	1/4	6.4	0.44	11.2	250	1.72	0.05	0.07
20129600	5/16	7.9	0.50	12.7	250	1.72	0.07	0.10
20129601	3/8	9.5	0.59	15.0	250	1.72	0.08	0.12
20129602	1/2	12.7	0.75	19.1	200	1.38	0.12	0.18
20129603	5/8	15.9	0.87	22.1	200	1.38	0.15	0.22
20337878	3/4	19.1	1.02	25.9	150	1.03	0.19	0.28
20316305	1	25.4	1.34	34.0	125	0.86	0.31	0.46
20463346	1e	31.75	1.72	43.6	125	0.86	0.60	0.89
20463340	1f	38.1	1.98	50.2	125	0.86	0.72	1.07



## Food Master™ Xtreme™ 250SD CR Hose



- Tube:** Type S (Sanitron™). White.
- Reinforcement:** Synthetic, high tensile textile with static conductive filament; resilient monofilament helix providing crush and kink resistance.
- Cover:** Type P (EPDM). White or gray with burgundy spiral stripe.
- Design Factor:** 4:1
- Packaging:** 100' coiled and wrapped in polyethylene.
- Temperature:** -40°F to +230°F (-40°C to +110°C) continuous service.
- Branding:** Continuous transfer label. Example: "Gates® Food Master™ Xtreme™ 250SD CR Meets FDA, 3A and USDA 250 PSI WP (1.72MPa) Made in U.S.A."
- Standards:** Meets FDA requirements, 3A-Class 3 and USDA.

Transfer of milk, juice, beer, soft drinks, pharmaceuticals, cosmetics or water-based products requiring an FDA sanitary hose. It is also suitable for many dry bulk products via suction, pneumatic or gravity where a sanitary hose is required.

Color	ID		OD		Max WP		Vac in/Hg	MBR in	Wt./Ft lbs	Length ft	Item #
	in	mm	in	mm	psi	bar					
Gray	3/4	19.1	1.22	31.0	250	17.2	30.0	2.0	.42	100	CPEB-012
Gray	1	25.4	1.48	37.6	250	17.2	30.0	3.0	.52	100	CPEB-016
Gray	1-1/2	38.1	2.07	52.6	250	17.2	30.0	4.5	.90	100	CPEB-024
Gray	1-1/2	38.1	2.07	52.6	250	17.2	30.0	4.5	.90	200	CPEB-024
Gray	2	50.8	2.62	66.5	250	17.2	30.0	6.0	1.21	100	CPEB-032
Gray	2-1/2	63.5	3.25	82.6	250	17.2	30.0	12.0	1.82	100	CPEB-040
Gray	2-1/2	63.5	3.25	82.6	250	17.2	30.0	12.0	1.81	200	CPEB-040
Gray	3	76.2	3.86	98.0	250	17.2	30.0	18.0	2.46	100	CPEB-048
Gray	4	101.6	4.88	124.0	250	17.2	30.0	36.0	3.24	100	CPEB-064
White	3/4	19.1	1.22	31.0	250	17.2	30.0	2.0	.42	100	CPEB-012
White	1	25.4	1.48	37.6	250	17.2	30.0	3.0	.52	100	CPEB-016
White	1-1/2	38.1	2.07	52.6	250	17.2	30.0	4.5	.90	100	CPEB-024
White	2	50.8	2.62	66.5	250	17.2	30.0	6.0	1.19	100	CPEB-032
White	2-1/2	63.5	3.25	82.6	250	17.2	30.0	12.0	1.82	100	CPEB-040
White	3	76.2	3.86	98.0	250	17.2	30.0	18.0	2.47	100	CPEB-048
White	4	101.6	4.88	124.0	250	17.2	30.0	36.0	3.24	100	CPEB-064

# Gates 3-A Series Hoses

## Food Master® Beverage 150SD CR Hose

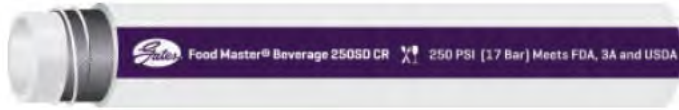


- Tube:** Type M (Sanitron™). White.
- Reinforcement:** Synthetic, high tensile textile with resilient monofilament helix providing crush and kink-resistance.
- Cover:** Type P (EPDM). Gray with burgundy stripe.
- Design Factor:** 4:1
- Temperature:** -40°F to +212°F (-40°C to +100°C) continuous service.
- Standards:** Meets FDA requirements, 3A-Class 3 and USDA.

Transfer of milk, juice, beer, soft drinks, pharmaceuticals, cosmetics or water-based products requiring a FDA sanitary hose.

Color	ID		OD		Max WP		Vac	MBR	Wt./Ft	Length	Item #
	in	mm	in	mm	psi	bar	in/Hg	in	lbs	ft	
Gray	1-1/2	38.1	2.00	50.8	150	10.3	30.0	6.0	.65	100	GFMB-024
Gray	2	50.8	2.50	63.5	150	10.3	30.0	12.0	.96	100	GFMB-032
Gray	2-1/2	63.5	3.11	79.0	150	10.3	30.0	22.0	1.62	100	GFMB-040
Gray	3	76.2	3.75	95.3	150	10.3	30.0	20.0	2.13	100	GFMB-048
Gray	4	101.6	4.76	120.9	150	10.3	30.0	28.0	3.16	100	GFMB-064

## Food Master® Beverage 250SD CR Hose



- Tube:** Type S (Sanitron™). White.
- Reinforcement:** Synthetic, high tensile textile with resilient monofilament helix providing crush and kink-resistance.
- Cover:** Type P (EPDM). White with burgundy stripe.
- Design Factor:** 4:1
- Temperature:** -40°F to +230°F (-40°C to +110°C) continuous service.
- Standards:** Meets FDA requirements, 3A-Class 3 and USDA.

Transfer of milk, juice, beer, soft drinks, pharmaceuticals, cosmetics or water-based products requiring a FDA sanitary hose.

Color	ID		OD		Max WP		Vac	MBR	Wt./Ft	Length	Item #
	in	mm	in	mm	psi	bar	in/Hg	in	lbs	ft	
White	1	25.4	1.48	37.6	250	17.2	30.0	3.0	.52	100	3132-0180
White	1-1/2	38.1	2.07	52.6	250	17.2	30.0	4.5	.97	100	3132-0181
White	2	50.8	2.62	66.5	250	17.2	30.0	6.0	1.32	100	3132-0182
White	2-1/2	63.5	3.25	82.6	250	17.2	30.0	12.0	1.60	100	3132-0186
White	3	76.2	3.86	98.0	250	17.2	30.0	18.0	2.20	100	3132-0183
White	4	101.6	4.88	124.0	250	17.2	30.0	36.0	2.75	100	3132-0184

# Gates 3-A Series Hoses

## Food Master® Oils and Dairy 150SD Hose

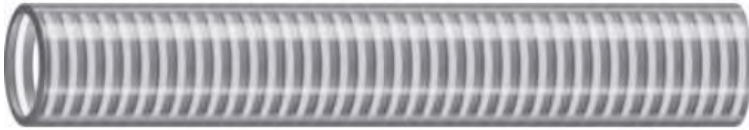


- Tube:** Type C2 (Modified Nitrile). Sanitary FDA and 3A–Class 3. White.
- Reinforcement:** Synthetic, high tensile textile with steel wire helix
- Cover:** Type C2 (Modified Nitrile). White corrugated with burgundy stripe.
- Design Factor:** 4:1
- Packaging:** 100' coiled and wrapped in polyethylene.
- Temperature:** -40°F to +230°F (-40°C to +110°C) continuous service.
- Standards:** Tube meets FDA requirements, 3A–Class 3 and USDA. Phthalate free.

Transfer of milk, juice, beer, soft drinks, pharmaceuticals, cosmetics or water-based products requiring an FDA sanitary hose. It is also suitable for many dry bulk products via suction, pneumatic or gravity where a sanitary hose is required.

Color	ID		OD		Max WP		Vac	MBR	Wt./Ft	Length	Item #
	in	mm	in	mm	psi	bar	in/Hg	in	lbs	ft	
White	3/4	19.1	1.29	32.8	150	10.3	30.0	2.0	.65	100	GFMOD-012
White	3/4	19.1	1.29	32.8	150	10.3	30.0	2.0	.64	200	GFMOD-012
White	1	25.4	1.54	39.1	150	10.3	30.0	3.0	.79	100	GFMOD-016
White	1-1/2	38.1	2.05	52.1	150	10.3	30.0	4.5	1.15	100	GFMOD-024
White	2	50.8	2.55	64.8	150	10.3	30.0	6.0	1.50	100	GFMOD-032
White	2-1/2	63.5	3.08	78.2	150	10.3	30.0	12.0	1.98	100	GFMOD-040
White	3	76.2	3.58	90.9	150	10.3	30.0	18.0	2.35	100	GFMOD-048
White	4	101.6	4.60	116.8	150	10.3	30.0	24.0	3.12	100	GFMOD-064
White	4	101.6	4.60	116.8	150	10.3	30.0	18.0	3.13	200	GFMOD-064
White	6	152.4	6.69	169.9	150	10.3	30.0	36.0	5.59	50	GFMOD-096

## Food Master-Flex® SD Clear Hose



- Tube:** Type G (PVC). Sanitary FDA. Clear. Smooth
- Reinforcement:** Rigid thermoplastic reinforcement. Clear
- Cover:** Type G (PVC). Sanitary FDA. Clear. Smooth
- Design Factor:** 3:1
- Temperature:** -10°F to +130°F (-23°C to +55°C) continuous service.
- Standards:** Meets FDA requirements, 3A-Class 3 and USDA.

Transfer of bulk food products via suction, pneumatic or gravity systems where sanitary hose is required.

Color	ID		OD		Max WP		Vac	MBR	Wt./Ft	Length	Item #
	in	mm	in	mm	psi	bar	in/Hg	in	lbs	ft	
Clear	1	25.4	1.29	32.8	100	6.9	28.0	3.0	.30	100	GFMFSDC-016
Clear	1-1/4	31.8	1.56	39.6	90	6.2	28.0	4.0	.38	100	GFMFSDC-020
Clear	1-1/2	38.1	1.84	46.7	90	6.2	28.0	5.0	.48	100	GFMFSDC-024
Clear	2	50.8	2.39	60.7	70	4.8	28.0	6.0	.71	100	GFMFSDC-032
Clear	2-1/2	63.5	2.92	74.2	65	4.5	28.0	8.0	.97	100	GFMFSDC-040
Clear	3	76.2	3.46	87.9	60	4.1	28.0	9.0	1.27	100	GFMFSDC-048
Clear	4	101.6	4.56	115.8	50	3.4	28.0	12.0	2.00	100	GFMFSDC-064

# Novaflex 3-A Series Hoses

## 6300 Series Hose

*Nitrile Food 150 Suction & Discharge Hose*



- Tube:** FDA white nitrile
- Reinforcement:** Multiple plies of polyester tire cord with helix wire
- Cover:** Grey PVC nitrile.
- Length:** 100ft.
- Temperature Range:** -40°F (-40°C) to +210°F (+99°C)  
(Cleaning In Place to 248°F (+120°C) Not for continuous steam service.)

Recommended for the food transfer application that demands both flexibility and ruggedness with a clean white FDA grade tube. Meets FDA, USDA & 3A sanitary standards Authorized #1376. The food grade nitrile tube is odorless and tasteless for those oily transfer applications. Excellent for suction and discharge applications. This ultra smooth microbe resistant tube is built on special stainless steel mandrels for cleanliness.

Part No.	I.D.	O.D.	Plies	WP	MBR	WT
				psi		LBS/FT
N6300-00750-012	¾	1.29	2	150	4	0.4
N6300-01000-016	1	1.54	2	150	5	0.5
N6300-01500-024	1½	2.05	2	150	6	0.71
N6300-02000-032	2	2.55	2	150	7	0.95
N6300-03000-048	3	3.76	2	150	9	1.51
N6300-04000-064	4	4.76	2	150	12	1.98

## 6301 Series Hose

*Nitrile Food Discharge Hose*



- Tube:** FDA white nitrile
- Reinforcement:** Multiple plies of polyester tire cord with helix wire
- Cover:** Grey PVC nitrile.
- Length:** 100ft.
- Temperature Range:** -40°F (-40°C) to +210°F (+99°C)  
(Cleaning In Place to 248°F (+120°C) Not for continuous steam service.)

Recommended for the food transfer application that demands both flexibility and ruggedness with a clean white FDA grade tube. Meets FDA, USDA & 3A sanitary standards Authorized #1376. The food grade nitrile tube is odorless and tasteless for those oily transfer applications. Excellent for discharge applications. This ultra smooth microbe resistant tube is built on special stainless steel mandrels for cleanliness.

Part No.	I.D.	O.D.	Plies	WP	MBR	WT
				psi		LBS/FT
N6301-00500-008	½	.99	2	250	n/a	0.31
N6301-00750-012	¾	1.24	2	250	n/a	0.41
N6301-01000-016	1	1.62	4	250	n/a	0.64
N6301-01500-024	1½	2.12	4	250	n/a	0.93
N6301-02000-032	2	2.62	4	250	n/a	1.26
N6301-03000-048	3	3.64	4	250	n/a	1.64
N6301-03000-048	3	3.76	6	250	n/a	1.91
N6301-04000-064	4	4.64	4	250	n/a	2.19
N6301-04000-064	4	4.76	6	250	n/a	2.53

# Novaflex 3-A Series Hoses

## 6303 Series Hose

*Corrugated Nitrile Food 150 Suction & Discharge Hose*



- Tube:** FDA white nitrile
- Reinforcement:** Multiple plies of polyester tire cord with helix
- Cover:** Grey PVC nitrile.
- Length:** 100ft.
- Temperature Range:** -40°F (-40°C) to +210°F (+99°C)  
(Cleaning In Place to 248°F (+120°C) Not for continuous steam service)

This food transfer hose is designed to provide maximum flexibility along with an abrasive resistant cover. Excellent for the transfer of oily product in full suction and discharge applications. Meets FDA, USDA & 3A sanitary standards Authorized #1376. This ultra smooth microbe resistant tube is built on special stainless steel mandrels for cleanliness.

Part No.	I.D.	O.D.	Plies	WP	MBR	WT
				psi		LBS/FT
N6303-01500-024	1½	2.13	2	150	6	0.73
N6303-02000-032	2	2.63	2	150	7	0.98
N6303-03000-048	3	3.74	2	150	9	1.53
N6303-04000-064	4	4.75	2	150	12	1.99



## 6500 Series Hose

*Connoisseurs Food & Beverage Suction and Discharge Hose*



- Tube:** FDA white nitrile
- Reinforcement:** Multiple plies of polyester tire cord with helix
- Cover:** Grey PVC nitrile.
- Length:** 100ft.
- Temperature Range:** -40°F (-40°C) to +210°F (+99°C)  
(Cleaning In Place to 248°F (+120°C) Not for continuous steam service)

The connoisseur line of food hose is designed to meet the food processing industries demanding applications. Connoisseur is built in a variety of hose constructions utilizing a white chlorobutyl tube for non-oily applications that will not impart taste or odor. Meets FDA, USDA, and 3-A Sanitary Standards Authorized (#1376). Resistant to CIP solutions. This ultra smooth microbe resistant tube is built on special stainless steel mandrels for cleanliness.

Part No.	I.D.	O.D.	Plies	Max WP	MBR	Vacuum Rating	WT
				psi			LBS/FT
N6500-00750-012	¾	1.29	2	150	4	Full	0.4
N6500-01000-016	1	1.54	2	150	5	Full	0.5
N6500-01500-024	1½	2.05	2	150	6	Full	0.71
N6500-02000-032	2	2.55	2	150	7	Full	0.95
N6500-02500-036	2½	3.14	2	150	8	Full	1.19
N6500-03000-048	3	3.67	2	150	12	Full	1.51
N6500-04000-064	4	4.67	2	150	16	Full	1.98

# Novaflex 3-A Series Hoses

## 6501 Series Hose

*Connoisseurs Discharge Hose*



- Tube:** White chlorobutyl (microbe resistant (non oily applications))
- Reinforcement:** Multiple plies of polyester tire cord
- Cover:** Grey EPDM
- Length:** 100ft.
- Temperature:** -40°F (-40°C) to +240°F (+116°C)  
(Cleaning In Place to 248°F (+120°C) Not for continuous steam service, can be open end steam cleaned.

Same high quality hose as Novaflex 6500, designed to handle non-oily applications only. The multi-ply construction provides excellent resistance to kinking. Meets the requirements of FDA, USDA & 3-A (cert#1376)

Part No.	I.D.	O.D.	Plies	Max WP	WT
				psi	LBS/FT
N6501-00500-008	½	.99	2	250	0.31
N6501-07500-012	¾	1.24	2	250	0.41
N6501-01000-016	1	1.49	2	250	0.52
N6501-01000-016	1	1.62	4	250	0.64
N6501-01500-024	1½	2.12	4	250	0.93
N6501-02000-032	2	2.62	4	250	1.26
N6501-03000-048	3	3.64	4	250	1.64
N6401-03000-048	3	3.76	6	250	1.91
N6401-04000-064	4	4.64	4	250	2.19
N6401-04000-064	4	4.76	6	250	2.53

# Novaflex 3-A Series Hoses

## 6502 Series Hose

*High Pressure, Superior Quality Brewery Discharge Hose*



- Tube:** White chlorobutyl (non oily applications)
- Reinforcement:** Multiple plies of polyester tire cord
- Cover:** Red EPDM
- Length:** 100ft.
- Temperature:** -40°F (-40°C) to +240°F (+116°C)  
(Cleaning In Place to 248°F (+120°C) Not for continuous steam service.)

Same high quality hose as Novaflex 6500, designed to handle non-oily applications only. The multi-ply construction provides excellent resistance to kinking. Meets the requirements of FDA, USDA & 3-A (cert#1376)

Part No.	I.D.	O.D.	Plies	Max WP	WT
				psi	LBS/FT
N6502-00750-012	¾	1.37	4	350	.59
N6502-01000-0016	1	1.70	4	350	.85
N6502-01500-024	1½	2.25	4	350	1.25
N6502-02000-032	2	2.88	6	350	1.89
N6502-02500-040	2½	3.51	6	350	2.70
N6502-03000-048	3	4.04	6	350	3.45
N6502-04000-064	4	5.31	6	350	5.40

# Novaflex 3-A Series Hoses

## 6503 Series Hose

*Connoisseurs Food & Beverage Hose*



- Tube:** White chlorobutyl (non oily applications)
- Reinforcement:** Multiple plies of polyester tire cord
- Cover:** Grey EPDM
- Length:** 100ft.
- Temperature Range:** -40°F (-40°C) to +240°F (+116°C)  
(Cleaning In Place to 248°F (+120°C) Not for continuous steam service.)

The same hose as Novaflex 6500 but with a corrugated cover. The special smooth chlorobutyl bacteria resistant tube is designed for non-oily products and will not impart odor or taste. Meets FDA, USDA & 3-A.

Part No.	I.D.	MBR	Plies	WP	WT
				psi	LBS/FT
N6503-02000-032	2	7	2	150	0.95
N6503-02500-040	2½	8	2	150	1.19
N6503-03000-048	3	9	2	150	1.51
N6503-04000-064	4	12	2	150	1.98

## 6505 Series Hose

### *Connoisseurs Wine Hose*



- Tube:** White chlorobutyl (non oily applications)
- Reinforcement:** Multiple plies of tire cord and dual mono-filament helix
- Cover:** Purple EPDM
- Length:** 100ft.
- Temperature:** -40°F (-40°C) to +240°F (+116°C)  
(Cleaning In Place to 248°F (+120°C) Not for continuous steam service.)

Connoisseurs Wine Hose. Special kink and crush resistant rubber hose, designed utilizing a multi-ply construction with dual special monofilament helix rods. The tube is for non-oily application. Designed to meet the demands of “cleaning in process”. This ultra smooth microbe resistant tube is built on special stainless steel mandrels for cleanliness.

Part No.	I.D.	O.D.	MBR	VAC	Plies	WP	WT
			(in)	(HG)		psi	LBS/FT
N6505-00750-012	¾	1.41	3	Full	2	250	0.39
N6505-01000-016	1	1.64	4	Full	2	250	0.48
N6505-01500-024	1½	2.14	5	Full	2	250	0.68
N6505-02000-032	2	2.77	7	Full	4	250	1.27
N6505-02500-040	2½	3.29	13	Full	4	250	1.55
N6505-03000-048	3	3.79	16	Full	4	250	1.89

# Novaflex 3-A Series Hoses

## 6506 Series Hose

*Connoisseurs Food & Beverage Hose*



- Tube:** White chlorobutyl (non oily applications)
- Reinforcement:** Multiple plies of polyester tire cord & dual monofilament helix
- Cover:** Gray EPDM abrasion resistant
- Length:** 100ft.
- Temperature:** -40°F (-40°C) to +240°F (+116°C)  
(Cleaning In Place to 248°F (+120°C) Not for continuous steam service.)

Special kink and crush resistant suction & discharge hose, designed for those more demanding applications requiring a product that meets 3-A (cert# 1376), FDA & USDA standards. Designed to meet the temperatures and chemical resistance associated with “cleaning in place” systems. This ultra smooth microbe resistant tube is built for non-oily applications, on special stainless steel mandrels for cleanliness.

Part No.	I.D.	O.D.	MBR	VAC	Plies	WP	WT
			(in)	(HG)		psi	LBS/FT
N6506-00750-012	¾	1.41	3.0	Full	2	250	0.33
N6506-01000-016	1	1.64	3.5	Full	2	250	0.44
N6506-01500-024	1½	2.14	4.5	Full	2	250	0.63
N6506-02000-032	2	2.77	7.0	Full	4	250	1.21
N6506-02500-040	2½	3.29	13.0	Full	4	250	1.52
N6506-03000-048	3	3.79	16.0	Full	4	250	1.84

## 6507NB Series Hose

*NovaBrew*



- Tube:** White chlorobutyl (non oily applications)
- Reinforcement:** Multiple plies of polyester tire cord & dual monofilament helix rods
- Cover:** Dark burgundy EPDM
- Length:** 100ft.
- Temperature:** -40°F (-40°C) to +240°F (+116°C)  
(Can be open end steam cleaned) CIP to 248°F (+120°C)

NovaBrew is a state of the art designed hose based on the specific requirements of the modern day brewery. NovaBrew has a rugged but flexible construction with a super smooth white hose tube for non-oily applications, that is microbe resistant along with a dark burgundy red cover that resists dirt scuffs and is easily cleaned. NovaBrew is built on stainless steel mandrels for cleanliness and meets FDA USDA and 3-A (certificate #1376).

Part No.	I.D.	O.D.	WP	MBR	Vacuum	WT
			psi		Hg	LBS/FT
N6507-07500-012	¾	1.41	250	4	Full	0.33
N6507-01000-016	1	1.64	250	4	Full	0.48
N6507-01500-024	1½	2.14	250	5	Full	0.65
N6507-02000-032	2	2.77	250	7	Full	1.26
N6507-02500-040	2½	3.29	250	13	Full	1.54

# Sanitary Fittings, Adaptors, Valve, Clamps

JGB offers a large selection of FDA approved high-purity Sanitary Fittings, Adaptors, Vales, and Clamps for Food, Dairy, Beverage, Biotech, Pharmaceutical, and all other Sanitary Process markets. Our Sanitary Fittings, Adaptors, Valve, Clamps meet FDA and USDA standards.

Sanitary Fittings are available in 316 Stainless Steel, 304 Steel, Polypropylene, PVDF, Polyethylene and many other sanitary materials.

These Sanitary Hose Fittings are available:

- Tri-Clamp®
- I-Line
- Bevel Seat
- Butt Weld
- Sanitary Clamp
- Spray Balls
- Butterfly Valves
- Sight Glass

## Bradford Sanitary Stems (Tri-Clamp)



- 316 Stainless Steel Sanitary Stems
- Meets FDA and USDA sanitary standards
- 1 inch to 4 inch
- Dixon sanitary crimp stems are only to be used with Dixon stainless steel crimp ferrules

## Dixon Sanitary Hose Fittings



- Dixon Tri-Clamp
- Dixon I-Line M x F
- Dixon Bevel Seat with Acme Nut

## Sanitary Butterfly Valve Adapter



- Holedall & Sanitary Fittings
- N3 - 316 Stainless Steel Seat ring: EPDM
- Convolute and Jack-Chem Fittings



# Sanitary Fittings, Adaptors, Valve, Clamps

## Bradford Round with Nitrile Inserts and Coupler - B24RPHC



- Holedall & Sanitary Fittings
- Nitrile inserts maximum temperature: 230°
- Coupler thread options:
- Standard - 3/8 NPT / Special - all thread
- 3/8-16 (part #B24RPHC16-G\*\*\*)
- 1/2-13 (part # B24RPHC13-G\*\*\*)

## PT Coupling White Nitrile Food Grade Gasket



- Holedall & Sanitary Fittings
- White Nitrile Food Grade Gasket - 1-1/2 Inch
- ProGrip™ Fittings - Sanitary Wine Fittings
- Made in the U.S.A.

## Tri-Clamp - Stainless Steel - PT Coupling Tri-Clover Clamp



- Holedall & Sanitary Fittings
- ProGrip™ Fittings - SE Internal Expansion System
- Sanitary Tri-Clamp - Stainless Steel
- Made in the U.S.A.

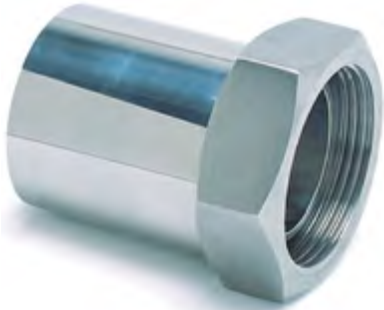
## Parker MSAN-S Mini Sanitary Fittings



- Holedall & Sanitary Fittings
- 316 Stainless Steel
- Crimp Fittings / Sanitary Fittings

# Sanitary Fittings, Adaptors, Valve, Clamps

## Parker FBS-S Female Bevel Seat Sanitary Fittings



- Holedall & Sanitary Fittings
- Crimp Fittings / Sanitary Fittings
- 316 Stainless Steel

## Dixon Sanitary Clamps



- Holedall & Sanitary Fittings
- Crimp Fittings / Sanitary Fittings
- 316 Stainless Steel

## Dixon Spring Check Valves



- Holedall & Sanitary Fittings
- Full Size Flowplate - Long Bushing
- 316 Stainless Steel
- This spring check valve is machined and polished to 3A standards.

## 1032 Sanitary Pressure Gauges / 4½ inch Dial



- Sanitary Gauges
- Sanitary Pressure Gauges
- 300 series stainless steel
- Bradford™ gauges meet 3A Sanitary Standards for Gauges for Milk and Milk Products, Number 74-00 (Authorization 640).

# Sanitary Fittings, Adaptors, Valve, Clamps

## 3 piece Stainless Steel Sanitary Ball Valve / BV2CV-050BB-FPC



- Ball Valve Automation
- BV2CV-050BB-FPC
- Industrial Ball Valves with Actuation
- Bradford™ automated ½” encapsulated 2-way ball valve butt weld ends spring

## 304 Sample Sanitary Valve



- Sample Valves
- 304 stainless steel
- Silicone O-ring and plunger to ensure a leak-proof connection
- Surface finish polished to sanitary standards
- End connections available: clamp and NPT

## Bradford B5102 Series Sanitary Butterfly Valve



The 5102 series is a patented clamp butterfly valve. This clamp valve is an incredible 1-3/8” wide on all sizes. The valve will fit into ¾” of line space. The grooved clamp housing connects directly to clamp style fittings. Easy assembly by removing the wing nuts and using a hex key for the handle to secure and seal the housing onto your lines.



**Stocking Locations**

**Williston Branch**  
520 Bean Dr.  
Williston, ND 58801  
(701) 774-2195

**Buffalo Branch**  
2540 Walden Ave.  
Cheektowaga, NY 14225  
(716) 684-8225

**JGB Corporate**  
115 Metropolitan Dr.  
Liverpool, NY 13088  
(315) 451-2770

**St. Louis Branch**  
9707 Green Park Industrial Dr.  
St. Louis, MO 63123  
(314) 487-3144

**SE Regional Hub**  
1407 Westinghouse Blvd.  
Suite B  
Charlotte, NC 28273  
(704) 588-9920

**Houston Branch**  
619 E Sam Houston Pkwy.  
Suite 200  
Pasadena, TX 77503  
(281) 930-7777

ISO 9001:2008 Compliant



Connect with us:

